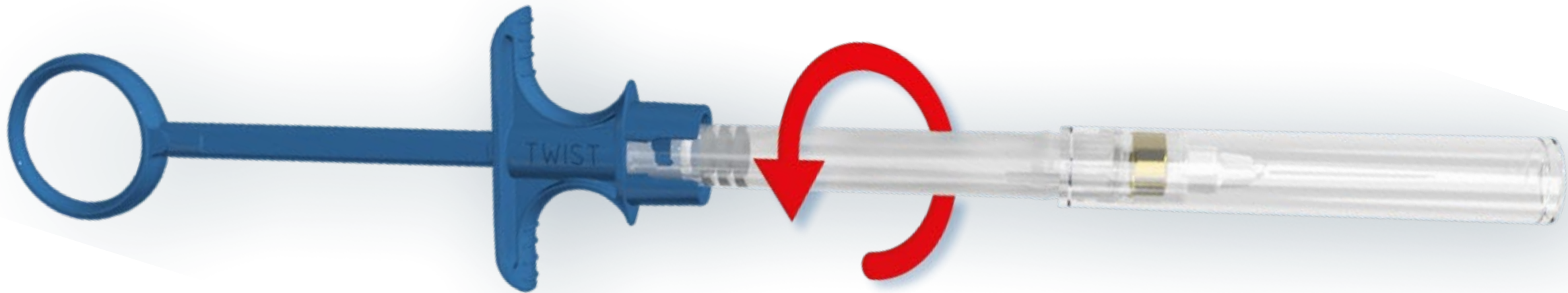


ULTRA SAFETY PLUS

BECOMES

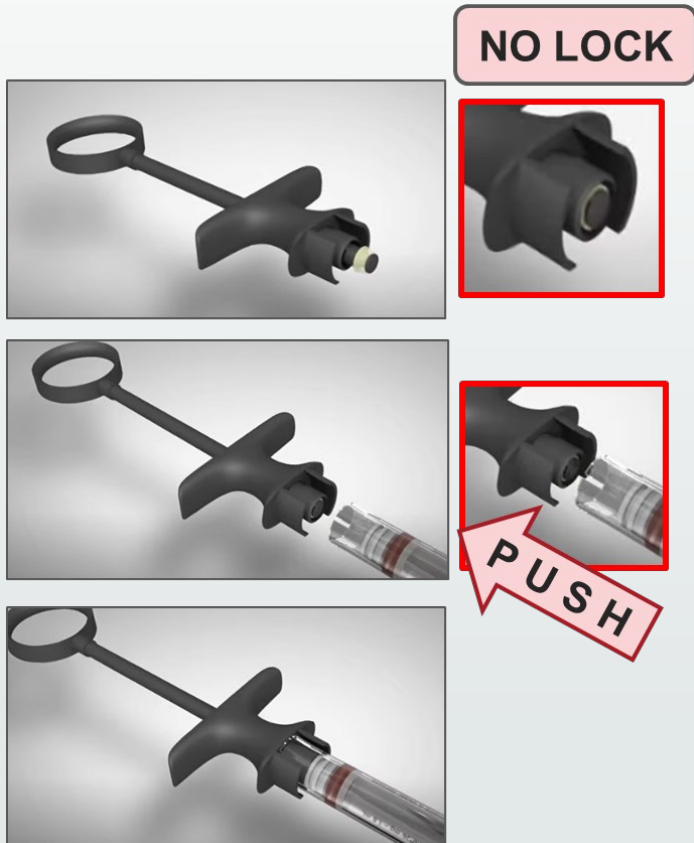
TWIST

TWIST AND YOU'RE COVERED !



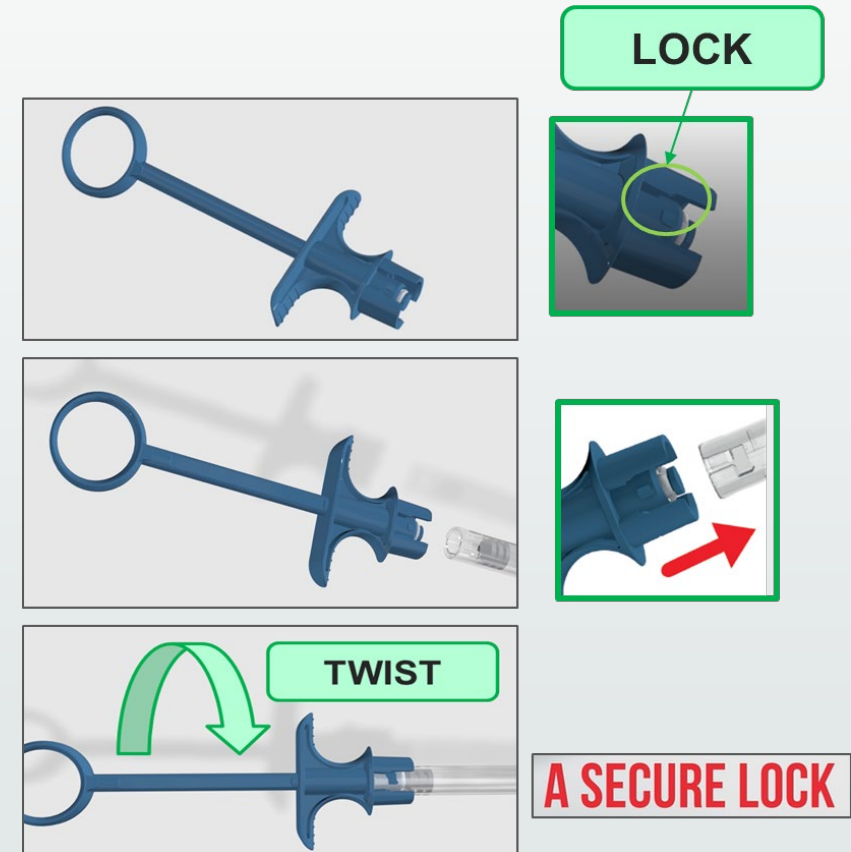
Technical differences between USP and USP Twist

ULTRA SAFETY PLUS



« Be cautious to keep the device assembled whenever you move the protective sheath and during the injection »

ULTRA SAFETY PLUS TWIST

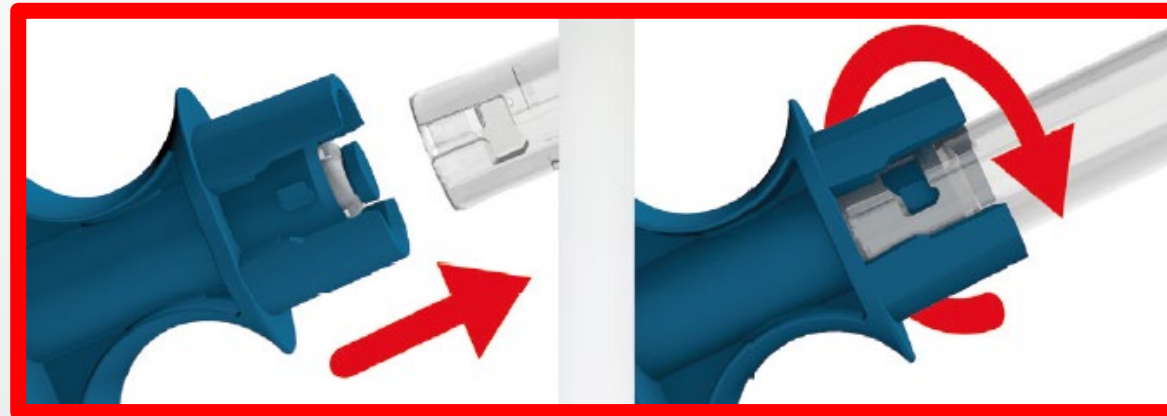


ULTRA SAFETY PLUS

TWIST

IS SAFE

NEW!



A SECURE LOCK

SAFETY-ENGINEERED DEVICE / NO RECAPPING

Security for the patient

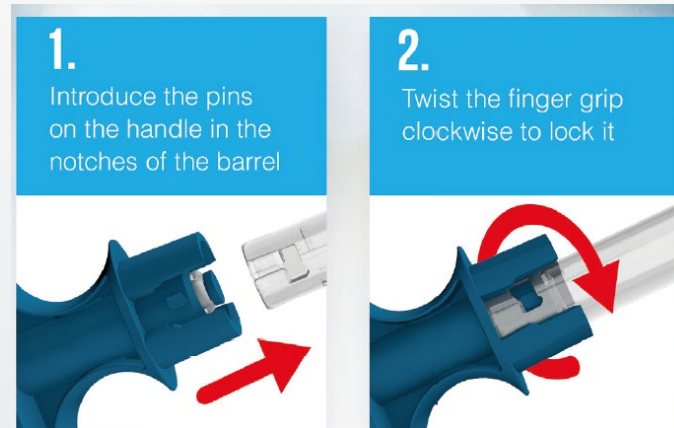
PATENTED LOCKING SYSTEM

A secure lock between the 2 parts of the device : security for the patient & the dentist

ULTRA SAFETY PLUS

TWIST

IS EASY

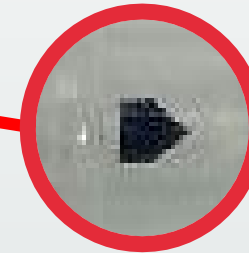


ONLY 2 EASY STEPS ARE NEEDED
FOR A SECURE ASSEMBLY
No learning curve, intuitive

ULTRA SAFETY PLUS

TWIST

IS EASY



**EVERY SINGLE NEEDLE HAS A BEVEL
INDICATOR :**

Needle can be inserted into tissue correctly,
reducing needle blockage

ULTRA SAFETY PLUS TWIST

IS SAFE



FIRST HOLDING POSITION

If the dentist needs to set the syringe down or reload*



FINAL LOCKING POSITION

When the procedure is over

**Do not reuse the injection device with several cartridges to avoid performance issues (cannula penetration, self aspiration and cannula breakage).*

ULTRA SAFETY PLUS

TWIST

IS SAFE

SINGLE USE HANDLE



STERILISABLE HANDLE



STERILE SINGLE USE NEEDLES



**HANDLE BOTH AVAILABLE IN SINGLE USE & STERILISABLE
VERSION**

STERILE , SINGLE USE NEEDLES

Avoid cross-contamination : safety for the patient

A complete range



USP Twist
(x 100 needles + 1
sterilisable handle)



USP Twist Part B
(x 50 sterile single use
handle)



USP Twist Part B
sterilisable + 5 O-rings



100 silicon
rings

ULTRASAFETYPLUS

TWIST

KEY INFORMATION & DIFFERENCES



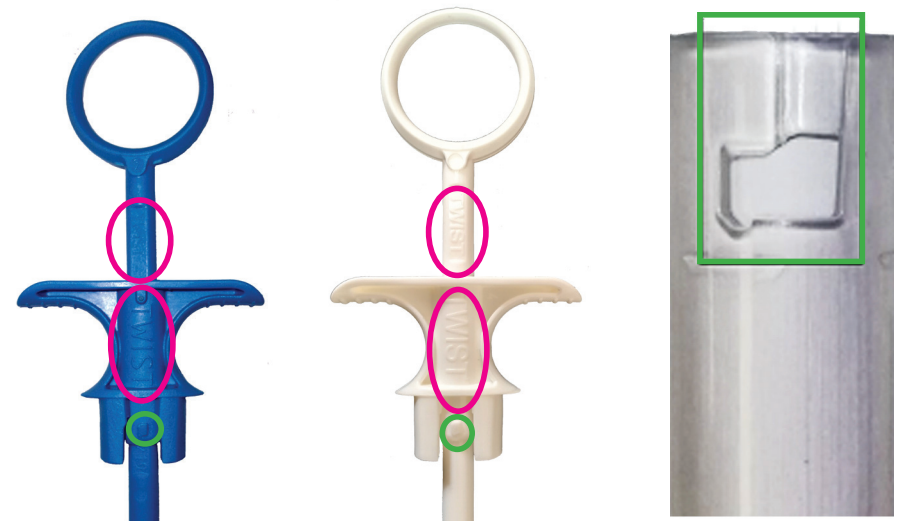
Ultra Safety Plus - the clinically proven needle-stick injury prevention device - has changed to Ultra Safety Plus Twist.
The syringe and handles now have a simple two step assembly - the new handles simply TWIST on and off.
The old and new systems are NOT interchangeable - a TWIST handle must only be used with a TWIST syringe.



TWIST sterilisable handles are now **BLUE** not **black**

TWIST single-use disposable handles are still **WHITE**

TWIST syringes have an L-shaped cut-out at the bottom



The word "**TWIST**" is written on the box of syringes and the box of single use handles, as well as on the individual syringe packets. It is also written in *two* places on the *handles* themselves

There is a **lug** on the handles that fits into the **L-shaped** cut-out in the syringe. Once fitted, just twist to secure. The safety holding and final locking positions remain the same

Please note that the old and new systems are NOT interchangeable.

Please ensure that every clinical member of the Practice completes the online CPD training, which includes a "How to Use" video, at: www.septodontlearning.co.uk
Help and advice is available from Septodont: information@septodont.co.uk or book an appointment with a Product Specialist on www.septodont.co.uk